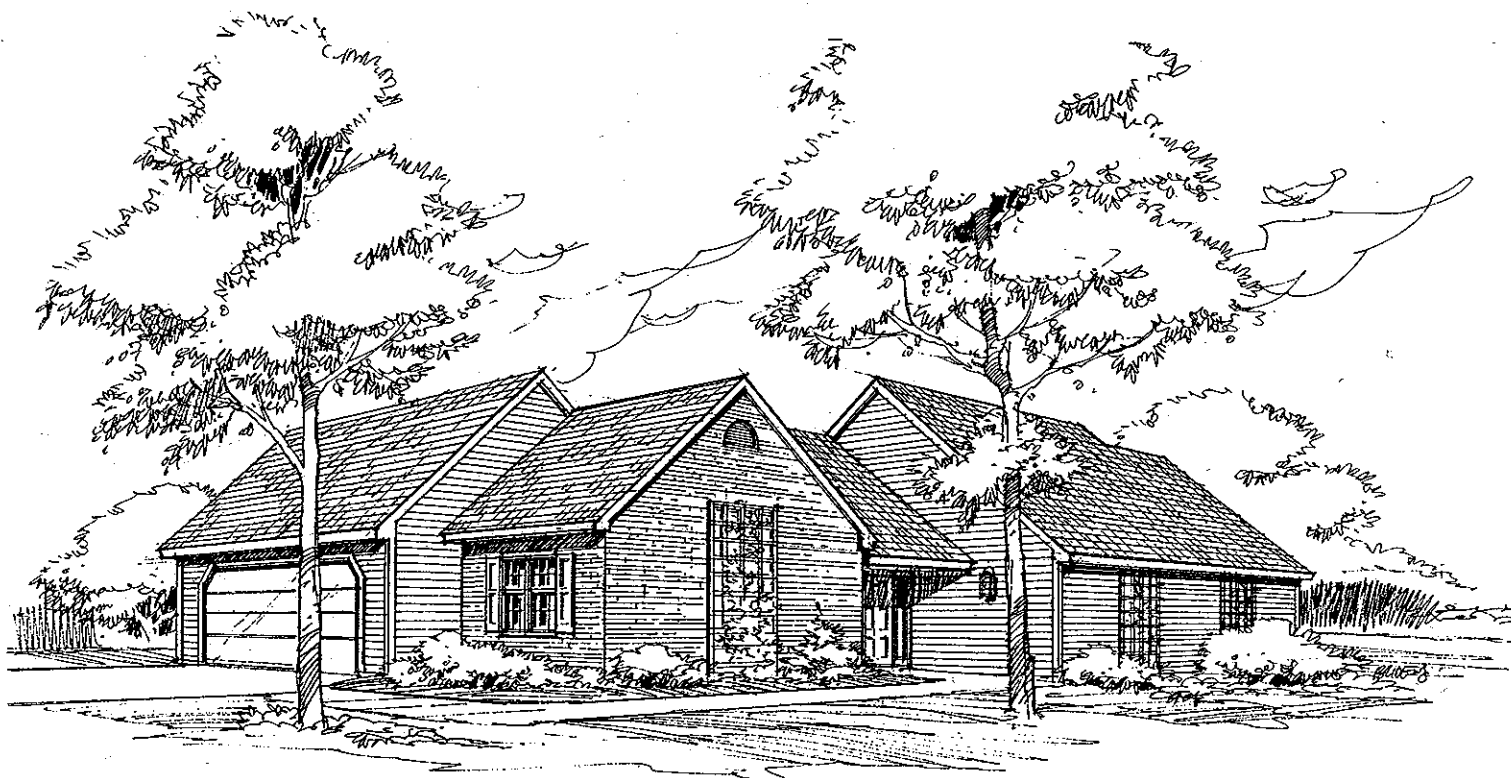
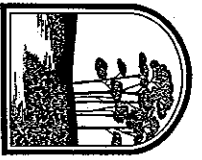


# Ashbury



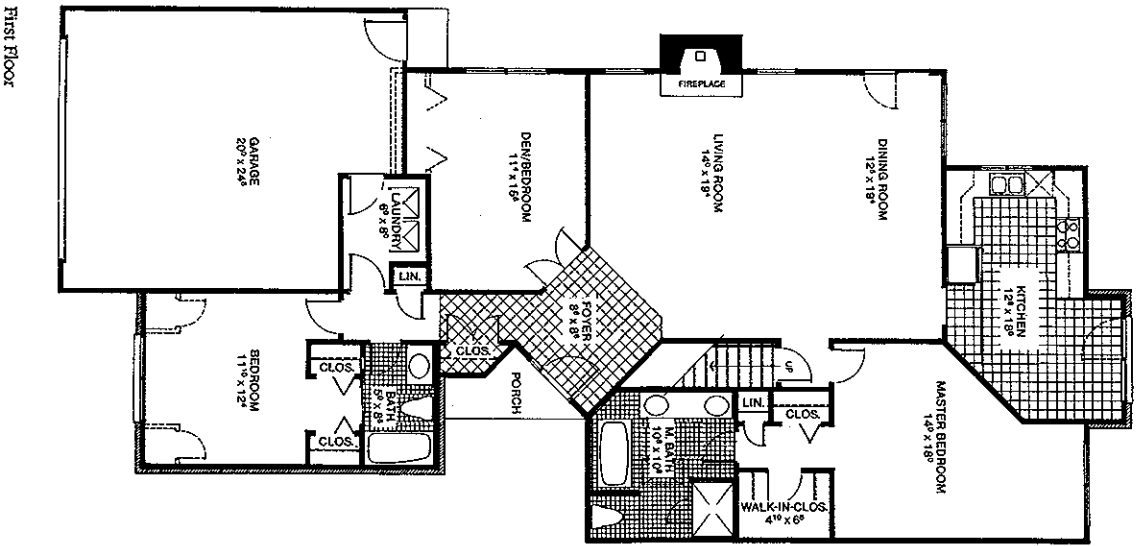
LAN AVON



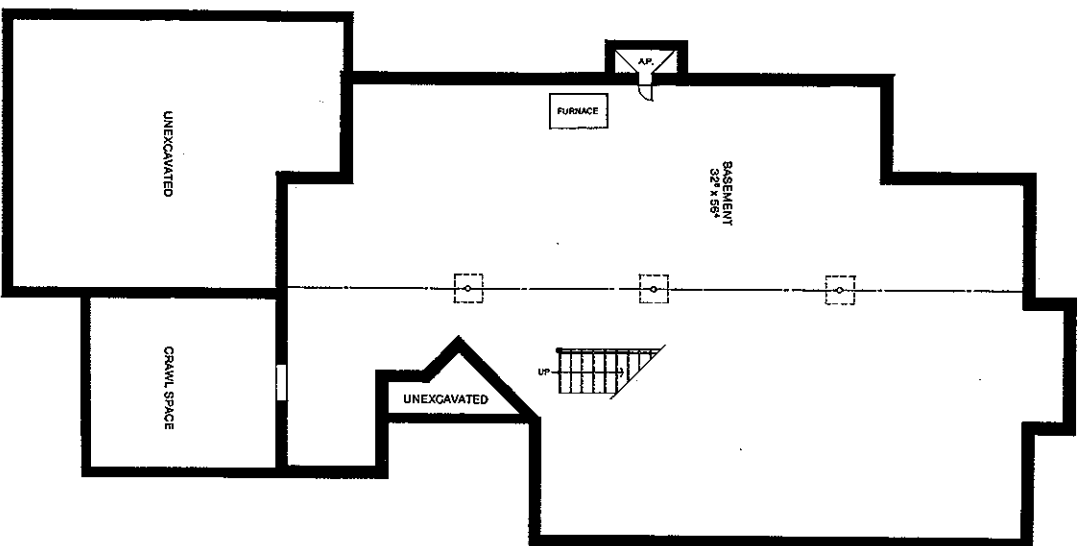
# Ashbury

The Ashbury offers 1,840 square feet of architectural elegance on one floor. Beyond an angled foyer lies the living and dining room which features a cathedral ceiling and stunning fireplace flanked by tall ornate windows. A gourmet kitchen includes a cozy breakfast nook with terrace doors opening onto a deck or patio.

The spacious master bedroom suite features multiple closets and a luxurious master bathroom with platform tub, separate shower, double vanity and skylight. The Ashbury also features a study/bedroom, second full bath and laundry room. Like all Tan Avon homes, a two-car garage, full basement, ample closets and storage are included. Superior materials and craftsmanship are standard.



First Floor



Basement

Information on this floor plan may be subject to minor and/or major changes.